



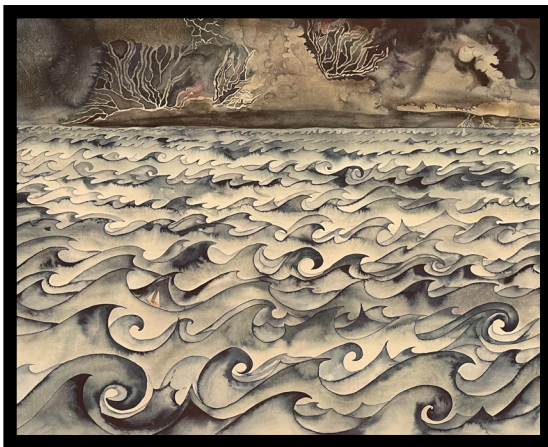
WAIMEA ARTS COUNCIL

67-1201 Mamalahoa Highway
P.O. Box 1818 • Kamuela, HI 96743 • Ph: 808-887-1052
WaimeaArtsCouncil.org • waimeaartscouncil@gmail.com

WAC is a nonprofit organization dedicated to promoting the arts, the encouragement of artists, and providing a forum for art-related community events.

Newsletter Version 4.0 Vol. 78 Issue 4
July, 2022

<http://www.waimeaartscouncil.org/>
Facebook: Waimea Arts Council/ Firehouse gallery

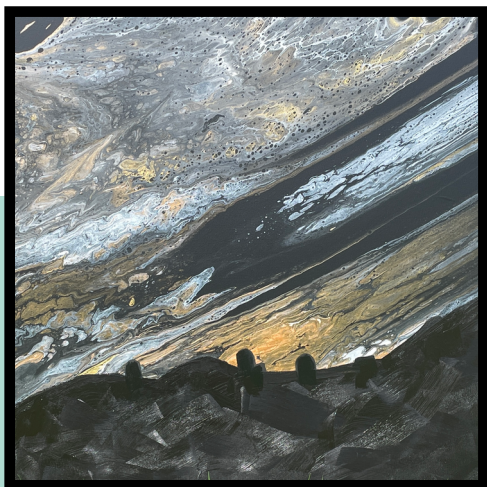


More about this work on Page 4

Huaka'i Show Exhibition

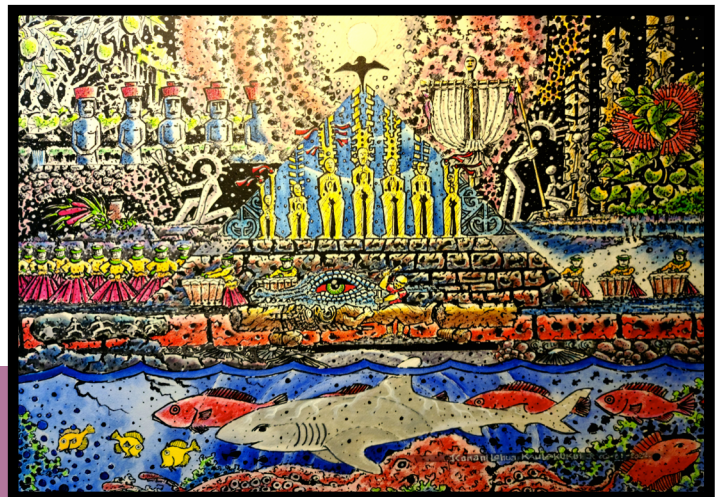
The public is invited to attend the Waimea Arts Council's newest show, Huaka'i, The Hawaii Island Juried Art Competition and Exhibition at the Firehouse Gallery, which runs from July 1 - August 28, 2022.

This show features art that exemplifies the meaning of Huaka'i, as a journey, a voyage, or path taken, often with a purpose to gain a deeper understanding of oneself, culture, ancestors, or one's soul.



Judges Stephen Freedman and Philippe Nault picked from 74 entries and awarded cash prizes for First Place: "The Storm" by Hannah Charlotte Simmons, Second Place: "Galaxy Rising (Mauna Kea Summit)" by Kate Asis, Third Place: "Ku'u Huaka'i" by James Kanani Kaulukukui Jr.

(cont'd pg2)



Top: "The Storm" by Hannah Charlotte Simmons
Bottom Left: "Galaxy Rising" by Kate Asis
Right: Ku'u Huak'i" by James Kanani Kaulukukui Jr

FIREHOUSE GALLERY PRESENTS:



HUAKA'I

JOURNEY - VOYAGE - PATHWAY
JURIED ART COMPETITION AND EXHIBITION

JULY 1 - AUGUST 28, 2022

FIRST PLACE WINNER: "THE STORM"
WATERCOLOR BY HANNAH CHARLOTTE SIMMONS



Firehouse Gallery

Huaka'i Exhibition cont'd

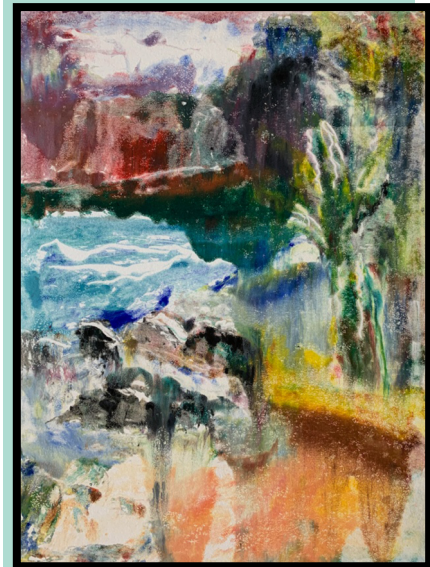


More about this work on Page 4



Four Honorable Mentions were also awarded, (shown clockwise beginning top center) "Ka Wa Ma Mua, Ka Wa Ma Hope (The Time That Came Before The Time That Follows)" by Sarah Taylor Ko, "Crossings: Kalōpā Bridge" by Margo Ray, "Dream" by Merrie Jo Snow and "Along The Way" by Barbara Schaefer,

The virtual Huaka'i exhibition can be viewed on the Waimea Arts Council YouTube page at <https://youtu.be/DOTMmZRQ5tE>.



“I found I could say things with color and shapes that I couldn’t say any other way—things I had no words for.” – *Georgia O’Keeffe*



Firehouse Gallery

Gallery Show Calendar 2022

Thank you Docents!

As a community arts organization, we’d be nowhere if it weren’t for the folks who actually keep the doors open. Mahalo nui loa to the June & July docents:

- Cathy Cordry
- Terry Bensch
- Daniel Koenigsburg
- Anne Adele Smith
- Chris Kutler
- Suzi Lacey
- Julie McCue
- Barbara Schaefer
- Kathy Sprinkle
- Parker Mason
- Lorie Taylor
- Kim Horn
- Dawn Sagar
- Carol McMillan
- Norma Watt
- Janice Gail
- Amaury St. Gilles
- Karen Thrasher
- Brenda Meriwether



July 1- August 28: *Island Wide Juried Show*
Huaka`i/Journey

September 2- September 25: *Themed with the Aloha Festival*

September 30- November 27: *38th Annual Founders Juried Art Show*

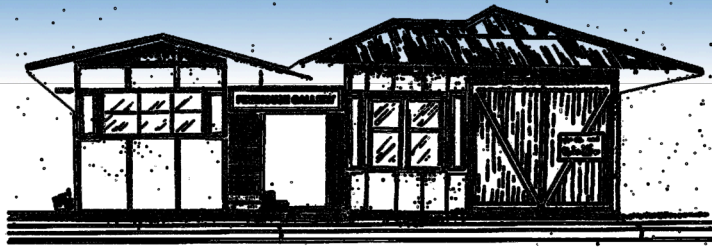
December 2-January 29, 2023: *A Dreamy, Whimsical Holiday Celebration*

The Waimea Arts Council
cordially invites you, your friends & family to the
HUAKA’I ARTISTS’ RECEPTION & TALK STORY WITH JUDGES
STEPHEN FREEDMAN & PHILIPPE F. NAULT
SUNDAY, JULY 31
Reception: Noon – 3:00 p.m.
Talk Story with the Judges: 1:00 p.m.

Refreshments will be served in open-air tent next to the gallery

A note from the editor: If you have content you’d like to see in upcoming editions, please contact me at: dawnsagarwaimea@gmail.com

Above Images, left to right:
“Great Wave Over Mauna Loa” Erik Kaye
“The Way to the Beach: Roads Series” Cathy Cordry
“Message in a Bottle” Deborah Masterson



W A I M E A A R T S C O U N C I L
 67-1201 Mamalahoa Highway
 P.O. Box 1818 • Kamuela, HI 96743 • Ph: 808-887-1052
 WaimeaArtsCouncil.org • waimeaartscouncil@gmail.com

Talk Story with the WAC Community

By Chris Kutler

more information on our Facebook Page:
 Firehouse Gallery and Waimea Arts Council



NEW MEMBER!

Brenda Meriwether recently became a member of the Firehouse Gallery where you can now find her island-inspired decorative ceramic tiles on display. Benda was drawn to clay by the "something from nothing" concept and has been influenced by her travels around the world with more than 46 years experience in ceramics.

MORE ABOUT THE WORK

Hannah Simmons, on her award-winning piece "The Storm":
 "I've been living on my sailboat for the past 8 years circumnavigating. I've been working with watercolors as it's the most practical medium for life at sea. Once the pandemic descended upon the world, island nations began to close their borders; creating a barrier to our passage westward. Once we realized that it could be years before we could again sail west, we decided to battle the trade winds toward Hawaii. We knew that big island was once our home, and would welcome us. That passage from Majuro, Marshall Islands, against the trade winds was very intense and it was a passage I will never forget. It was, however, the inspiration behind the watercolor painting, "the storm." It took 47 days to get to hawaii. It was horrific and beautiful at the same time. It was the ultimate voyage which I've tried to illustrate with water color.

Sarah Ko, on her award-winning piece Ka Wa Ma Mua, Ka Wa Ma Hope (The Time That Came Before The Time That Follows)

Huaka'i has connotations of both a physical and spiritual journey. My intention was to reference both in my work. The title comes from a Hawaiian proverb often translated, *the past informs the future*, about our collective journey through time where, like the ancient navigators, we tack from the known star behind toward uncharted destinations. I paint with mixed media on birch boards so that I can distress the surface. The resulting patina contrasts with the bright, tropical colors and modern design. I used heavy texture in this piece reminiscent of tapa cloth and alluding to movement. I wanted to impart the feeling of floating in space, or in the ocean, and a connection with both wise ancestors and the natural world.

TRANSITIONS

Linde Kienle's creative paper art added a bit of whimsical to our gallery. She never ceased to surprise with her magical creativity from tiny book earrings to folding wood sculptures. Educated as a restoration bookbinder, Linde began thinking of a book as multi-dimensional where the opening and closing of the folded paper created movement. She experimented with cutting away negative spaces to allow different layers to play with light and shadow, opening the way for dimensional effects.

After an illness, Linde passed away last December. The Firehouse Gallery artists will miss her friendly spirit and her entertaining storytelling.

