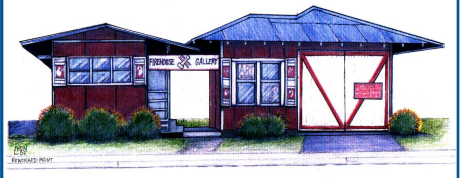


WAIMEA ARTS COUNCIL

JUNE, 2016



PO Box 1818
67-1201 Mamalahoa Highway
Kamuela, HI 96743

808-887-1052

www.waimeartscouncil.org

facebook: [waimea arts council/firehouse gallery](https://www.facebook.com/waimea.arts.council/firehouse.gallery)

WAC is a nonprofit organization dedicated to promoting the arts, the encouragement of artists, and providing a forum for art-related community events.

In the Firehouse Gallery Front Gallery

Honokaa Artists

June 1 - 30, 2016

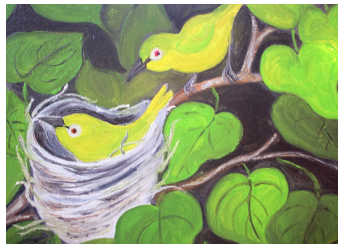
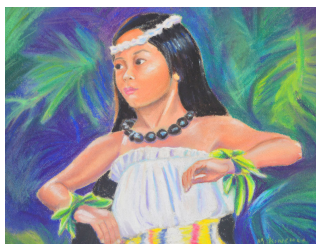
Honokaa artists Pat Dinsman and Marie Kinchla will exhibit their island inspired, colorful original paintings and fine art photographs June 1 thru June 30 at the Firehouse Gallery in Waimea. Both artists are inspired by their tropical surroundings and island life has clearly influenced their work. Also both are accomplished artists, members of the Waimea Arts Council and have volunteered countless hours and energy to the gallery.

Reception
Sun. June 12
Noon - 4 pm

Kinchla paints island images, capturing island colors and light in watercolor, oil paintings, and sometimes pastel. Kinchla vacationed here for over twenty years and moved to Honokaa several years ago. She has displayed her art in several different galleries and art shows on the mainland, Oahu, and at the Firehouse Gallery in Waimea. She received a BA in Fine Arts.

Dinsman started drawing and painting when she was a child, and then went on to study and earn a BA degree in Art from CSUSB. She grew up in southern California surrounded by deserts, mountains, and the Pacific Ocean. She often visited Palm Springs, the San Bernardino Mountains, Laguna Beach, Moro Bay, Arizona, and New Mexico. She derives inspiration from the places she has traveled to and lived. Definitely, the experience of living in Hawaii has influenced her current work. She enjoys depicting the love and feel of what she sees and experiences in her photography and oil paintings. Animals, nature and people are included in her collection of island art.

A reception will be held on Sunday, June 12 at the Firehouse Gallery from noon to 4 pm and is open to the public as well as friends of the artists.

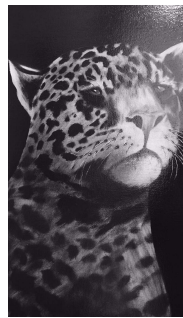


In the Firehouse Back Gallery

Small Solo Shows

May 18 - June 30

On exhibit in the Back Gallery of the Firehouse Gallery, are small solo shows by four artists of the Waimea Arts Council. Featured are acrylic works by Marty Allen and Merna Joan Watta as well as oil paintings by Bill Bishop and photography by Ramona Frances.



"Black Jaguar"
Oil by Bill Bishop

through June 30.

These exhibits began on May 18 and will continue



"Morning Glory"
Photo by Ramona Frances



"Hanalei"
Acrylic by Merna Joan Watta



"Royal View"
Oil by Marty Allen

The Firehouse Gallery is the most visible project of the Waimea Arts Council and is located at 67-1201 Mamalahoa Highway, in the heart of downtown Kamuela. It is housed in South Kohala's historic old fire station, at the crossroads of Mamalahoa Highway and Lindsey Rd. (Hwy. 19 and 190), across from the Waimea Chevron. Gallery is open Wednesday-Friday and Sunday, 11 am to 3 pm, and Saturdays 9 am to 3 pm. There is plenty of free parking behind the building.

Left to right:

"Am I doing this Right?" Pastel by Marie Kinchla
"Japanese White Eye" Oil by Pat Dinsman

New Looks for the gallery!

The outside of the gallery is looking very colorful these days. In addition to the big mural on the side facing the park, we now have one in the back that is visible as you walk from the parking lot, one on the library side for anyone walking from that direction, and one in the courtyard area between the buildings.

These pieces were all discovered when the Cherry Blossom mural was removed. One of these pieces was on the back of it, and the other two were underneath. We can't read the name of the artist on the large one. The two smaller ones were painted by students at St. Joseph's school, in Hilo, and given to WAC back in the 90s. If anyone has any more information about these paintings, contact Amaury.



Looking for co-chair for Helen Cassidy Show

We are putting out a call for a volunteer to be a Co-Chair for the Helen Cassidy Juried show which will be held in October, 2016. No experience needed!

This is the perfect opportunity for someone to learn what is required to put on a show, and then be able to take over as the lead chair the following year.

If we can begin this pattern, we will always have someone ready to go early the following year, a necessity if we wish to invite the Hawaii State Foundation on Culture and the Arts to visit the show.

We already have an experienced chairperson who is working on getting a judge and are looking for a willing trainee to assist. Hours spent on this could be counted towards the volunteer requirement, and it is something you could do at home. Contact Amaury at amaury96780@hawaiiantel.net if you can help.

On the inside of the gallery, we have begun utilizing the space up near the ceiling to showcase large pieces of art that don't fit well on the main walls. There will be large print labels that can be read from below.



FIREHOUSE GALLERY 2016 UPCOMING CALENDAR... *(subject to change)*

Honokaa Artists - Pat Dinsman and Marie Kinchla	Front Gallery	June 1 - June 30
Artists' Reception		June 12, noon to 4 pm
Small Solos: Merna Joan Watta, Ramona Frances, Bill Bishop, and Marty Allen	Back Gallery	May 18 - June 30
"Love Your Pets" a fundraiser for the Humane Society member show <i>(take-in June 25)</i>	Front Gallery	July 1 - July 30
"Anything Goes" member show <i>(take-in June 25)</i>	Back Gallery	July 2 - August 27
"Panoramas" member show <i>(take-in July 30)</i>	Front Gallery	August 3 - August 27
"Flora and Fauna" Carolyn Lancaster and Julie McCue	Front Gallery	August 31 - Sept. 30
Small solos - Christian Marinello, Patricia Marinello, Patti Johnson-Pease and Chris Kutler	Back Gallery	August 31 - Sept. 30
"32nd Annual Helen M. Cassidy Juried Art Show" <i>(take-in October 1)</i>	Front Gallery	October 5 - Oct. 29
"Affordable Art" member show <i>(take-in October 1)</i>	Back Gallery	October 5 - Oct. 29
"Affordable Art" member show + Jewelry <i>(take-in October 29)</i>	Front Gallery	November 2 - Dec. 3
"Flowers" member show <i>(take-in Oct. 29)</i>	Back Gallery	November 2 - Dec. 3
"Water" member show <i>(take-in Dec. 3)</i>	Front Gallery	Dec. 7 - Jan. 3, 2017

Workshops coming up...

Beginning Silk Painting

Saturday, June 11, 9 a.m.-12:30 p.m.

\$50 (\$45 WAC members) plus \$10 supply fee

It's all about playing with colors!

Experience the unique qualities of painting an 8" x 53" silk crepe scarf with liquid dyes. Workshop includes an introduction on color theory to choose your 3 colors, then stretching the floating scarf on the frame. Instructor Patti Pease Johnson provides all the supplies. Just show up and have fun with your personal creative time.



Each student receives personal help from the instructor on mixing colors using the four printing process colors: cyan, magenta, yellow & black, or use available premixed colors. This workshop includes an introduction on color theory. You are encouraged to play with colors using a brush to apply liquid dyes directly onto silk in a freestyle form of painting. Learn techniques such as wet on wet, wet on dry, and salt to create different surface textures on your abstractive style scarf painting. The result is your one-of-a-kind design on a stylish 8" x 53" scarf.

PLUS, in the final hour, you will use hot wax with the tjanting tool on China silk to draw a design and then paint an 8" x 8" wall artwork. Beginning and experienced artists ages 18 & up welcome.

Intermediate Silk Painting

Saturday June 11, 1:30-5 p.m.

\$50 (\$45 WAC members) plus \$10 supply fee

In this 3 1/2-hour session, students will create a 12 x18" painting on China silk. First is stretching the silk on a frame, second is drawing your design on the silk, and next is using the wax tjanting tool to outline the design and create a resist line for the dyes. An 8x8" sampler will be done before moving to the larger silk piece, as a way to get comfortable with the hot wax tjanting tool. All colors are achieved by premixing the four process colors, or mixing them directly on the silk. This class is a great way to have fun with the instant results of dyes and make a personal statement with your own artwork. Silk painting experience or completion of the beginning silk scarf class recommended but not required. Students should have a design concept in mind from an original photograph or bring in some plant material or objects for an idea. Good composition discussed. Instructor help for each student's design ideas. Open to ages 18 & up.



Call the gallery at 887-1052 or email Karen Alexander at any96706@yahoo.com to register. **Registration and payment is due by May 31. Checks should be made payable to Waimea Arts Council.**

More workshops coming up on July 9th - Watercolor and Pastels. Details next newsletter.

Sunglasses Project - it's not too late!

The posters from the sunglasses project will remain on display in the back gallery through the month of June, so if you haven't found your picture yet, stop by and take a look. Copies of your photo or small posters including your photo (8" x 10" or 11" x 14") can be ordered at the gallery.

New Members

We have had a number of new members join since November - Welcome to all!

Participating:

Karen Alexander, Kapaau - *pastel, pen & ink, sculpture*

Isanna Erlenbach, Waimea - *jewelry, photography, ceramics*

Linda Hostalek, Honokaa - *watercolor, mixed media*

Patti Johnson-Pease, Keaau - *silk painting*

Chris Kutler, Waikoloa - *watercolor, pen & Ink, photography*

Christian Marinello, Ninole - *stone sculpture, wood and metal*

Patricia Marinello, Ninole - *abstract oils*

Manuel Mero Jr., Kailua-Kona - *wood jewelry*

Holly Young, Papa'aloa - *bronze sculpture*

Friends of WAC

Diane, Scott and Kiera Foster, Waimea

Sandra Ho, Kailua-Kona

Upcoming member shows...

See calendar for full schedule and take-in dates for these shows.

July Front Gallery - "Love Your Pets" This will be a fundraiser for the Hawaii Island Humane Society and WAC will donate 5% of all sales for this month to HIHS.

August Front Gallery - "Panoramas" Landscape depictions that must be wider than they are tall.

July & August Back Gallery - "Anything Goes" Whatever subject you wish to explore!

October - 32nd Annual Helen Cassidy Memorial Juried Show

October - November "Affordable Art" (under \$250)

November - "Flowers"

The next board meeting will be on Saturday, June 11 at 2:30 pm in the gallery (due to class in the bunkhouse). Any member wishing to attend is welcome. Contact Amaury at amaury96780@hawaiiantel.net if you have an issue to discuss.

Community Events coming up...

Kahilu Theatre 885-6868 kahilutheatre.org

Jun 6-7, 7 pm. **"Thunder From Down Under"**. The perfect girls night outback! Australia's Hottest Export, showing chiseled bodies, seductive dance routines, cheeky humor and boy-next-door charm that you won't be able to resist. \$62.50/\$52.50/\$42.50 (+\$5.50 if bought at door).

June 17-19, Fri. Sat. 7 pm, Sun. 4 pm. **"Grease, the Musical"** A Youth Troupe Production with some cameo roles by older community members. Go back to Rydell High's senior class of 1959: duck-tailed, hot-rodding "Burger Palace Boys" and their gum-snapping, hip shaking "Pink Ladies" in bobby sox and pedal pushers. \$33/\$27/\$22/\$16.

Jun 26, 7 pm. **"Palm Records@Luce Studio with Lito Arkangel"** 2015 Na Hoku Hanohano Nominee as Most Promising New Artist, Lito Arkangel grew up in Kea'au. He is known as one of Hawaii's best falsetto singers and entertainers. Accompanied by Hawaii Island steel guitarist, Dwight Tokumoto and dance by Pualani (Kalauli) Kaho'onei. \$28 general admission.

Waimea Community Theatre and Chorus

885-5818 waimeacommunitytheatre.org.

June 4-5, Sat. 7 pm, Sun. 3 pm. at the Kahilu Theatre. **"Back to Tin Pan Alley: 1899-1929"** The music of composers George M. Cohan, the Von Tilzers, Irving Berlin, Rodgers & Hart, Hammerstein & Kern, George & Ira Gershwin and Cole Porter will be featured. \$19/\$16/\$10

Website Updates

Our website is going to be getting a new look and some new features.

1. The Home page will feature some photos of the facility and Waimea as well as serve to introduce WAC and lead you to the rest of the site.

2. We will be adding a section about our artists with a chance for our artist members to have a link to a page similar to the Gallery of Artists book in the gallery. More details later on how this will be implemented.

3. It will provide a link to our facebook page.

Other changes will be announced as we get closer.

Julie McCue is heading up this project, using a professional web design service. The target date to have it up and running is Sept. 1. The current website will be available until the new one is ready to go.

If there is something you would like to see on the website that we don't currently have, contact jmccue@hawaii.rr.com. We will see if it is possible.



Offering a full range of quality art, glass,
and craft materials
at affordable prices

Hale Kui Plaza – Mauka of Home Depot
73-4976 Kamanu Street, #108
Kailua-Kona, Hawaii 96740

808.334.0292

Monday thru Saturday – 9:30 to 5:30

Mahalo to our Volunteers

The following members volunteered during the month of May. Mahalo!

Docents: Pat Dinsman, Bernt Grundseth, Terry Bensch, Patricia Marinello, Marie Kinchla, Teresa Crowell, Merna Watta, Julie McCue, Janice Gail, Barbara Schaefer, Marty Allen

Other: Christian and Patricia Marinello, Bill Bishop, Susan Harris, Judy Folk, Jay West, Julie McCue, Irina Place, Wendi Roehrig, Amaury St. Gilles, Karen Alexander, Merna Joan Watta.

A special mahalo to Christian and Patricia Marinello, new members who have already been pitching in and working on a number of maintenance and repair items, as well as hanging the large pieces.

WAIMEA ARTS COUNCIL BOARD OF DIRECTORS AND COMMITTEE CHAIRPERSONS

2015 - 2016 Contact Information

President	Amaury St. Gilles	amaury96780@hawaiiantel.net
Vice Pres.	Pat Dinsman	pldinsman@hawaii.rr.com
Secretary	Irina Place	placeirina9@gmail.com
Treasurer	Jay West	artglass@aloha.net
Corr. Sec.	Julie McCue	jmccue@hawaii.rr.com
At Large	Wendi Roehrig	wendi.roehrig@gmail.com
Membership/Gallery	Pat Dinsman	
Newsletter/Website	Julie McCue	
Hospitality	Irina Place	
Newspaper Publicity	Corey Humphrey	
Workshops	Karen Alexander	