

WAIMEA ARTS COUNCIL



PO Box 1818, KAMUELA, HI 96743
808-887-1052 • WWW.WAIMEAARTSCOUNCIL.ORG

February Firehouse Gallery Art Exhibit Cherry Blossom Theme Exhibition February 2 - 26

In February, the Firehouse Gallery will feature art and fine crafts from Arts Council members with a Cherry Blossom Theme. All members are asked to bring in artwork for this show between Jan. 26 and 29. This show is in conjunction with the 18th Annual Waimea Cherry Blossom Heritage Festival to be held on Saturday, February 5. The Gallery will be open extended hours, from 9 am to 3 pm on the day of the Festival.

We will also be looking to select artwork to be featured on the front of next year's collector's souvenir program. This year's program will feature the artwork of Julie McCue, who has been a member of Waimea Arts Council since 2003 and painting in watercolor since 1996.



"Cherry Blossoms"
watercolor by Julie McCue

Festival Events at WAC

Keiki Chalk Art

Parents are welcome to bring the kids to the Keiki Chalk art tent on the lawn at the Historic Corner Park. The arts council provides a shaded area where kids can use large sidewalk chalk to draw on the concrete surface. Please supervise your children in this area.

Artists Demonstrate at the Senior Center (old county courthouse)

Throughout the day Waimea Arts Council members will be demonstrating their skills as artists and fine crafters. Demonstrations planned include Jay West (papermaking), Terry Bensch (graphite drawing), Janice Gail (character drawing), Kathleen Jaeger (mosaics), and Bill Jaeger (stained glass). Artists will have fine art and craft available for purchase throughout the day. Proceeds will help fund the 26th Annual Na 'Opio Junior Juried Show in March 2011.

Art Classes being offered by Janice Gail

Janice Gail is going to offer **Pastel and Oil Workshops**, to be held three Saturdays; April 2, 9 and 16, 9:00 A.M. to 1:00 P.M at the Firehouse Gallery. The cost per person, for all 3 workshops, is \$65.00. (Each participant

(Janice Gail...Continued on page 2)

18th Annual Waimea Cherry Blossom Festival

The Festival this year remembers two individuals who have made exceptional contributions in their respective fields of interest. They are lei- and kapa-making kupuna Marie McDonald and local agriculture researcher Milton Yamasaki.

The festival offers a wide range of activities sprawling eastward from the Parker Ranch Historic Homes on Mamalahoa Highway to the Hawaiian Homestead Farmer's Market on Highway 19. Pink banners identify site locations.

Japanese and multicultural performing arts' demonstrations of bonsai, origami, tea ceremony, quilting and mocha pounding' plus a host of cultural craft fairs are planned. Free shuttle transportation will be available.

Light Bulb Exchange

In conjunction with Kohala Center and the Blue Planet Foundation, Waimea Arts Council will be participating in the Compact Fluorescent Light (CFL) Bulb Exchange Fundraising Project. This limited time program will start Saturday, February 5 during the Annual Cherry Blossom Festival and continue until the end of April at the Firehouse Gallery. The public can exchange an unlimited number of incandescent light bulbs for free new, better-for-the-environment compact fluorescent light.

As you may know, CFLs are more efficient than old-style bulbs and need less electricity to produce the same

(Light Bulbs...Continued on page 4)



Board Talk...

We are replacing the monthly President's letter with articles from rotating members of the Board of Directors. This month's contribution is from Wendi Roehrig.

Sakura, Hanami and Ukiyo-e

Sakura (or cherry blossom) is a Japanese symbol and reminder of our floating world. *Hanami* (or flower viewing) is the Japanese custom of enjoying the beauty of flowers. Most often it is associated with sakura because of their beauty and short blooming season. *Ukiyo* (or the "floating world") refers to the idea of an evanescent world, fleeting beauty, love, money and entertainment (kabuki, courtesans and geisha) separated from the responsibilities of everyday life. *Ukiyo-e* (pictures of the floating world) depict scenes of everyday life and transient pleasures.

Japanese woodcut prints are the most common forms of ukiyo-e and have been the most popular form of Japanese art since their introduction to the Western World in the 1800's. Until that time, the Japanese didn't really consider them a true or valued art. In the 1870's under the new Meiji Emperor, Japan opened up to the outside world. Fine art was exported to Europe. To ensure safe and secure packing of fragile items such as fine porcelain, goods were wrapped in ukiyo-e! Only by chance were the prints discovered by Europeans who were fascinated by their charming everyday themes, intricate designs, harmony and color.

Ukiyo-e greatly influenced the Impressionists and Post Impressionists. Claude Monet collected a total of 231, many of which were hung in his home in Giverny. The famous bridge over his water lily pond was fashioned after the print by Hiroshige, *Wisteria Blooms over Water* at Kameido (c. 1856). He even covered his bridge with wisteria! Mary Cassatt found her inspiration for her famed color prints at an exhibit of Japanese prints at Beaux-Arts Academy in Paris. She adopted themes, devices, techniques and color from them. One is able to see the influence of ukiyo-e in the works by many other artists of that time including Degas, Pissarro, Gauguin and Van Gogh.

As we enter our hanami, let us appreciate, and reflect upon the human need and desire to see, appreciate and share the beauty and harmony in this ukiyo.

Wendi Roehrig, Vice President



"Golden Delicious"
pastel by Janice Gail

(Janice Gail....Continued from page 1)

is responsible for his/her own supplies and equipment).

April 2 - Demonstration of a Landscape from a photo, in both Soft (dry) Pastel and in Oil Paints. She will work on a colored ground in both mediums: for Soft Pastel, preference is Canson-miTientes Paper, (which comes in a huge variety of colors), 19" x 25", and for the Oil Painting, a 16" x 20" canvas will be primed and underpainted with a neutral gray acrylic gesso.

April 9 - The group will complete the first project or landscape, with a brief critique. Janice will begin the 2nd project, a still life in both Pastel and Oil.

April 16 - Completion of 2nd project (still life),

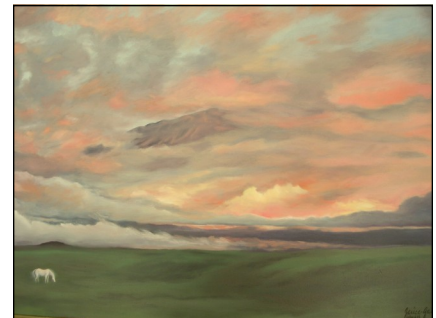
WAIMEA ARTS COUNCIL

BOARD OF DIRECTORS 2010-2011

President Emeritus - Dolly Loo
President - Judy Folk
Vice President - Wendi Roehrig
Treasurer - open (Judy Folk, acting)
Secretary - Martha Stephens
At large - Collie Will, Karen Thrasher, Clytie Mead

COMMITTEES

GALLERY - Jay West, Chair
Merna Joan Watta, Jill Breaux, Suzanne Haight,
Marian Stanton, Kathy Lukens
HOSPITALITY - Irina Place
PUBLIC RELATIONS
Sandy Mackey, - Press Releases
Kathy Lukens, Website
NEWSLETTER - Julie McCue, Barbara Schaefer
MEMBERSHIP - Julie McCue



"Mana Sunset"
oil by Janice Gail

critique and possible plans for continued workshops. Students may bring their own work in either medium as well.

Due to space restrictions, size of class will be limited, so if you are interested, please register right away. Call Janice at 936-1449 or janicegailart@aol.com.

In addition, there is space for 2 more students in Janice's semi-private Oil & Acrylic Workshops, held every Thursday at the Gallery Annex from 2:00 - 4:00 P.M. These workshops are usually \$40 for the 2-hour intensive lessons, but if she can register 2 more students on a 4-week commitment, the fee will be reduced to \$35 per student. These semi-private lessons are for individual projects by intermediate or advanced students, and do not include demonstrations.

MARCH, 2011
27th Annual Na 'Opio
Jr. Juried Art Show

The Waimea Arts Council announces a call for entries for the 27th Annual Na 'Opio Junior Juried Art Show held in March. Youngsters, grades 6 through 12, from these Big Island districts: North Kohala, South Kohala, and Hamakua are encouraged to submit entries during February.

The aim of this annual show is to promote and encourage talent among the students of North Hawaii districts. Competition is based on grade level rather than between schools. Paintings, drawings, sculpture and ceramics are welcome. Entries will be judged using five criteria: originality, visual balance, visual clarity, personal expression and execution of the medium.

Each student may enter one piece. Art must be original, completed during this school year, and it must not have won any previous prize or award in any other competition. Art submitted must be ready to hang; framed, matted, or mounted to cardboard; size may not exceed 28"x28" for two-dimensional art, 18"x18"x18" for three-dimensional art. There is no entry fee.

Art should be delivered to the Firehouse Gallery, on Saturday, Feb. 26, from 11:00 a.m. to 3:00 p.m. Entry forms will be available at the Firehouse Gallery. Parents or guardians must sign forms. Awards will be presented at a reception for artists, judge, family members, and art teachers at the Firehouse Gallery on Saturday, March 5, 2011, from 3:00 to 5:00 p.m. The public is invited to attend and support these young artists. The show will be on display from March 2 through March 26 in the Firehouse Gallery.

For more information contact Janice Gail, Exhibition Chair at 936-1449.

This newsletter is made possible by donations from Waimea Arts Council members and W.M. Keck Observatory who donates the printing. Mahalo!

WAC welcomes any news or comments, poetry, or anything you would like to share. Submit items to Julie McCue:

*jmccue@hawaii.rr.com, or
 PO Box 1515, Kapaau, HI 96755.*

Deadlines are the 15th of each month. Contributors this month: Jay West, Julie McCue, Wendi Roehrig, Janice Gail

Waimea Arts Council

WAC was founded in 1974 to stimulate and encourage the growth of the arts in North Hawaii. It is the oldest arts organization in the state. A volunteer board of directors that is drawn from the community governs the council. It is supported by donations from its members, businesses and small community grants. Membership is open to all supporters of the arts.

WAC sponsors programs, exhibits and visual arts education as well as providing services to individual artists. Exhibits at the Firehouse Gallery include: monthly individual artist shows, group juried shows and children's art exhibits.

Waimea Arts Council is located at Waimea's Historic Corner Park, at the crossroads of Hwy. 19 & 190. The organization utilizes the two buildings that used to house the fire station and the fireman's bunkhouse.

The Waimea Arts Council is a non-profit 501(c)3 organization. Contributions are much appreciated and are tax deductible to the extent allowable by law.

The mission statement for the Firehouse Gallery (fka Crossroads Gallery) is "a venue for Big Island artists to provide educational and creative opportunities for sharing work". The gallery is open Wednesday through Saturday, 11:00 a.m. to 3:00 p.m., subject to availability of the volunteer docents. For more information, call (808) 887-1052 or visit the web site: www.waimeaartscouncil.org.

FIREHOUSE GALLERY
UPCOMING 2011 CALENDAR

The main gallery is available with a small fee for special art exhibitions or events by community groups.

- Jan. 26 - 29 Bring in pieces for Feb. Cherry Blossom show
- February 2 - 26 WAC Member group show, Cherry Blossom theme
- February 5 Waimea Cherry Blossom Heritage Festival
Gallery open 9 am - 3 pm
- March 2 - 26 27th Annual Na 'Opio Junior Juried Art Show
- April 2, 9, 16 Workshops: Oil and Pastel with Janice Gail
- April Sewn beaded jewelry with Teresa Crowell
- April 9 - 23 Recycle Hawaii: Annual Art of School recycling school challenge
www.recyclehawaii.org for more information
- April 25 - 30 To be announced
- May Art sale to raise funds for the Waikoloa Donkey Rescue Project
- June Member Invitational Show
"Life's a Beach"

Calendar subject to change.
 Contact Gallery Chair, Jay West
 artglass@aloha.net • ph: 885-7812

Happy Valentine's Day



WAC Membership and Gallery Report December, 2010

New Members	1
Renewals	5
Total membership	56
Volunteer hours	89
Most hours	Judy Folk

Membership list as of 1/15/11

Anjalisa Aitken*, Karen Alexander, Carole Arnott, Terry Bensch*, Jill Breaux*, William Chillingworth, Mavis Cook, Rita Cowell, Teresa Crowell, Barbara Denman, Lynn Duggan, Sarah Ednie*, Gail Emerson, Sally Evans, Monica Fassoth-Kelly, Judy Folk*, Daniel Fowler, Diana Fowler, Janice Gail*, Stephen Godar, David Gomes, Ann Guth, Ian Haight*, Suzanne Haight*, F.W. Hendriks*, Liz Hendriks, January Herron, Beth Hutchinson*, Bill Jaeger*, Kathleen Jaeger*, Marilyn Koschella, Barbara Lago*, Kathy Lukens*, Sandra Mackey*, Julie McCue*, Clytie Mead*, Mary Bea Morris*, Sandra Nelson, Kathleen Nutting, Irina Place*, Diane Repp, Arielle Roehrig*, Wendi Roehrig*, Ginger Sandell*, Wilsa Saue, Barbara Schaefer, Myrna Smeeth*, Marian Stanton*, Martha Stephens*, Vinny Thom*, Beverly Thomas*, Karen Thrasher*, Tricia Vogt*, Tami Watanabe, Merna Joan Watta*, Jay West*, Collie Will*, Laurie Wilson*, Shirley Wilson.

*Gallery Participation Members

If you have any corrections to this list, please notify Julie McCue, jmccue@hawaii.rr.com.

(Light Bulbs.....Continued from page 1)

amount of light. By replacing one thousand old, 60-Watt bulbs with our 12-Watt CFLs, more than 750 barrels of oil will not be burned to make electricity. It will also prevent tons of carbon from polluting our air and precious oceans.

Waimea Arts Council will be awarded 40¢ per bulb that is exchanged through this program. Hawai'i Energy provides the CFL bulbs. Hawai'i Energy is a ratepayer-funded conservation and efficiency program, administered by R.W. BECK (an SAIC Company) under contract with the Hawaii Public Utilities Commission, serving the islands of Hawai'i, Lana'i, Maui Moloka'i and O'ahu.

Funds raised will help with the cost of replacing the organization's lights in the Firehouse Gallery with more energy efficient bulbs. If you are unable to exchange your bulbs during the festival, call 887-1052 to schedule another time that works for your schedule.

OUTSIDE EVENTS IN FEBRUARY

Waimea Community Theatre Feb. 25 - March 6 (Fri-Sat-Sun) 885-5818 www.waimeacommunitytheatre.org

Readings from Shakespeare's "King Lear". King Lear is a tragedy by William Shakespeare, believed to have been written between 1603 and 1606. It is considered one of his greatest works, in which the title character descends into madness from the consequences of foolishly disposing of his estate between two of his three daughters based on their flattery. The play is based on the legend of Leir of Britain, a mythological pre-Roman Celtic king. This production will be held at Parker Auditorium two weekends: February 25, 26, 27 and March 4, 5, 6,

Kahilu Theatre 885-6868 www.kahilutheatre.org

Feb. 2 7 pm Chris O'Riley and Carter Brey
Feb. 13 7 pm IMAGO Theatre "ZooZoo"
Feb. 17 'Ukulele and Slack Key Guitar Institute FREE
Feb. 18 8 pm 'Ukulele and Slack Key Guitar Masters I
Feb. 19 8 pm 'Ukulele and Slack Key Guitar Masters II
Feb. 22 7 pm Alpin Hong FREE
Feb. 24 7 pm Philadanco! The Philadelphia Dance Co.
Feb. 28 7 pm Film "Patsy Mink: Ahead of the Majority" FREE

Waimea Hawaiian Quilt Show Feb. 5-6 10 am-4 pm Thelma Parker Gym (Free - donations welcome)

An exceptional collection of Hawaiian quilts, a chance to meet the artists, trace patterns, learn tips and purchase handmade items from members. Kathy Tanaka 775-0765 or rktanaka@hawaii.rr.com

Waimea Community Education

885-1539
www.waimeaeducation.com

Beginning and Intermediate Watercolor Painting Wednesdays, Jan. 26 - Feb. 16 6 - 8 pm \$65
Janice Gail

Color mixing, brushwork techniques, and washes from up-close florals to panoramas. New material for previous students.

Introduction to Soft Pastels Thursdays Feb. 3 - 24 6-8 pm \$65 Jenny Cook

Soft Pastels are simple to use, colors range from soft and subtle to bold and brilliant. This class will focus on still life.

Regular meetings: - see January newsletter

"Art is the only way to run away without leaving home."

~Twyla Tharp
