

WAIMEA ARTS COUNCIL

PO Box 1818, Kamuela, HI 96743 • 808-887-1052
www.waimeaartscouncil.org

Newsletter - January, 2011



January Firehouse Gallery Art Exhibit Myrna Smeeth Kaha Ki'i

HAPPY NEW YEAR! The first show of 2011 at the Firehouse Gallery, January 5-29, will feature artist Myrna Smeeth, who has been involved with the gallery since 1995, the year that she first took up part time residence in Wai-koloa, Hawaii. There will be a reception for the artist on Saturday, Jan. 8, from 3 - 5 pm. The Firehouse Gallery, a program of Waimea Arts Council, is located in the old firehouse, the red building within the historic corner at the main stoplight and crossroads in Waimea.

Myrna had a very successful show at the gallery in Feb 2007 called 'Visions of Mauna Kea'. She is obsessed with 'mountain magic' - and never tires of watching the way the light changes the colors and illuminates, obscures or shadows the mounds, hills and pu'us. Fortunate indeed, Myrna has a 360° view from her yard - Mauna Kea, Mauna Loa, Hualalai sunsets, and the Kohala from the other side.....irrisistible for the painter! She will be focusing on two subjects in this show:

HAWAII PAINTINGS...There will be new works along a similar theme and approach as the pieces from her last show. She will primarily include fairly large canvases of Hawaiian landscapes or seascapes in thick acrylic and mixed media paint, rich and fairly textured. The process involves layering the paint, which often creates a somewhat translucent look. This can be a long procedure, due to the fact that acrylic paint dries a darker shade than when it's first laid down, so the artist has to be continually predicting, or guessing about just exactly what color will be the end product, and whether it will successfully work with the rest of the surrounding colors. It's a challenge to balance the critical intellectual component with the emotional 'painting from the heart' which is so important to convey her affection for the Hawaiian landscape. There will also be a few smaller paintings to complete the artist's impressions of Hawaii.

SKETCHES OF SPAIN.... and along the rivers between Moscow and St. Petersburg. Myrna has just returned from a European work/study tour which fulfilled life long dreams of visiting the world famous galleries of the most impressive collections in Spain and Russia (The Prado, and The Reina Sofia in Madrid, and in Russia, The Hermitage). She also visited the palaces of Peter

(Continued on page 2)



WAIMEA ARTS COUNCIL
Po Box 1818
Kamuela, HI 96743
www.waimeaartscouncil.org

The Waimea Arts Council is a 501 (c)3 non-profit organization dedicated to promoting the arts, encouragement of artists, and providing a forum for art-related community events. It is supported primarily through donations from its members and the public. Membership is open to all supporters of the arts. Monetary donations are tax deductible to the extent of the law.

WAIMEA ARTS COUNCIL 2010-2011 BOARD OF DIRECTORS

President Emeritus - Dolly Loo
President - Judy Folk
1st Vice President - Wendi Roehrig
Treasurer - open (Judy Folk, acting)
Secretary - Martha Stephens
At large - Collie Will, Karen Thrasher

COMMITTEES

GALLERY- Jay West, Chair
Merina Joan Watta, Jill Breaux, Suzanne Haight,
Marian Stanton, Kathy Lukens
HOSPITALITY - Irina Place
PUBLIC RELATIONS
Sandy Mackey, - Press Releases
Kathy Lukens, Website
NEWSLETTER - Julie McCue
MEMBERSHIP - Julie McCue



Myrna gets into the spirit of Spain!

From the President:

The closing of the year 2010 is upon us. The Firehouse Gallery and Waimea Arts Council has had a tumultuous year with lots of positive changes and progressive actions. Your new 2010-2011 Board is brainstorming and planning directions, fundraisers, and activities and shows that will continue to keep the gallery fresh and inviting. We want, need, and encourage your active participation also.

Foodland's Give Aloha program, and your donations to WAC through that program, have provided our account with needed operating funds in this slow moving economy, as did the truly memorable November show featuring the work of Kathleen and Bill Jaeger. Also a fine income producer and creating strong public relations coordination, the Hamakua Artisans Open House introduced new patrons to the Waimea Arts Council and highlighted its community focus. Each event and individual time spent in showcasing our wonderful Gallery is a positive reinforcement of why the Arts Council is here in the heart of Waimea.

Wishing each of you and your family a wondrous holiday season. Don't forget to make the Gallery one of the shops on your Christmas shopping list-either before or after the 25th. Bring in yourselves to docent, your friends to shop and anyone you can think of with whom to socialize!

Mark your calendars for Myrna Smeeth's January display in the front of the Gallery and update and freshen your own displays at the same time. Preparing your pieces now for the Cherry Blossom show in February will help you be proactive and organized. No matter what, enjoy your time and your family.

Aloha, Judy Folk, President

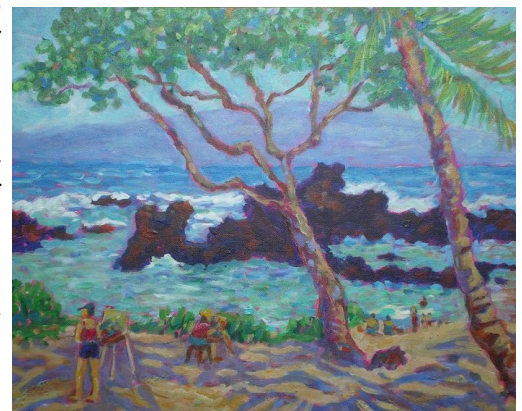
Myrna Smeeth, cont. from page 1

the Great, and Catherine, the woman who spent a lifetime collecting art and other treasures, to make St. Petersburg the envy of all Europe.

Included in this exhibition are a number of very quick watercolor and pen sketches rendered with great speed from the windows of the ship as it forged along through the Volga River in Russia, or the very fast Renfe trains in Spain lurching along the arid country side, marked by communities with whitewashed walls and red tile roofs, always with the old cathedral as center point, and often with ancient walls of stone protecting it all. So with all this inspiration, it was imperative to try and capture some of the spirit of the countries visited.

Myrna grew up in Saskatoon, Saskatchewan. Although she had no formal art training, Myrna was the impromptu "poster girl" and did most of the seasonal decor and posters for the arts and sports or social events at high school. She was very involved in ballet and studied with the two major Canadian dance companies. She later taught the dance program at the University while a student there in the Fine Arts Dept. She directed and choreographed the dances for musicals and variety shows while attending classes. After graduation Myrna continued teaching dance, and painting. Her professor offered her a scholarship at his university in U.S. Although very tempting, she chose another path..(always a question 'what would it have been if the other path had been followed?')

Marriage, three children , a move to Victoria B.C.with architect husband, and building a 'cliff-hanger' home on the bay, interrupted the painting. Myrna operated an in-home pottery studio as an interim solution, until life got simpler many years later and she was able to resume her painting. After the marriage dissolved Myrna continued her education and began a teaching career as a fine arts teacher. She has a BA from the University of Saskatchewan and a Professional Teaching Certificate and Masters Degree in Fine Arts in Education from the University of Victoria, B.C.



*"Plein Aire Painting at Kuhio Bay"
by Myrna Smeeth*

ARTISTS STATEMENT

As Descartes stated 'Cogito Ergo Sum' (I think therefore I am), I paint, therefore I am. It seems that painting is a necessity for me, as each day I am bombarded by light and color, I am compelled to respond by interpreting what I see. Nature is captivating in its many moods - the light, the wind and clouds, as they race across the sky are all part of the fascination. Though many different themes have been tackled over the years, it still comes back to the fundamentals of design and color and how to balance it all.

For further information, go to her website, www.artsmeeth.com.

The painting pictured in this article is missing. Myrna would be most grateful to anyone with information about it's whereabouts. Contact her at myrnabird@gmail.com.

FIREHOUSE GALLERY UPCOMING 2011 CALENDAR

*The main gallery is available with a small fee
for special art exhibitions or events by community groups.*

- January 5 - 29 Kahi Ki'i - Myrna Smeeth, Paintings of Hawaii and Sketches of Spain and Russia
- January 8 Reception for Myrna Smeeth 3 - 5 pm
- Jan. 26 - 29..... Bring in pieces for February Cherry Blossom show
- February 2 - 26 WAC Member group show, Cherry Blossom theme
- February 5 Waimea Cherry Blossom Heritage Festival

- March 2 - 26 27th Annual Na 'Opio Junior Juried Art Show

- April 1 - 8 Workshops: Pastel with Janice Gail; Sewn beaded jewelry with Teresa Crowell
- April 9 - 23 Recycle Hawaii: Annual Art of School recycling school challenge
Go to www.recyclehawaii.org for more information
- April 25 - 30 To be announced

- May Art sale to raise funds for the Waikoloa Donkey Rescue Project
- June Member Invitational Show "Life's a Beach"



Calendar subject to change. Contact Gallery Chair, Jay West • artglass@aloha.net • ph: 885-7812

This newsletter is made possible by donations from Waimea Arts council members and W.M. Keck Observatory who donates the printing. Mahalo!
WAC welcomes any news or comments, poetry, or anything you would like to share. Submit items to Julie McCue:
jmccue@hawaii.rr.com,
or mail to PO Box 1515, Kapaau, HI 96755.
Deadlines are the 15th of each month. Contributors this month: Jay West, Judy Folk, Julie McCue, Myrna Smeeth.

Creativity is allowing yourself to make mistakes. Art is knowing which ones to keep.

~Scott Adams

WAC Membership and Gallery Report November, 2010

New Members	3	Month	Gallery Open	# visitors
Renewals	5	September	16 days of 17	120
Total membership	50	October	17 days of 18	133
Volunteer hours	230	November	16 days of 16	129
Most hours - Kathleen Jaeger				

Membership list as of 12/31/10

Anjalisa Aitken*, Karen Alexander, Carole Arnott, Terry Bensch*, Jill Breaux*, William Chillingworth, Rita Cowell, Teresa Crowell, Barbara Denman, Lynn Duggan, Sarah Ednie*, Gail Emerson, Monica Fassoth-Kelly, Judy Folk*, Daniel Fowler, Diana Fowler, Janice Gail*, Stephen Godar, David Gomes, Ann Guth, Ian Haight*, Suzanne Haight*, F.W. Hendriks*, Liz Hendriks, January Herron, Beth Hutchinson*, Bill Jaeger*, Kathleen Jaeger*, Marilyn Koschella, Barbara Lago*, Kathy Lukens*, Sandra Mackey*, Julie McCue*, Clytie Mead*, Mary Bea Morris*, Sandra Nelson, Kathleen Nutting, Irina Place*, Diane Repp, Arielle Roehrig*, Wendi Roehrig*, Wilsa Saue, Barbara Schaefer, Myrna Smeeth*, Marian Stanton*, Martha Stephens*, Vinny Thom*, Beverly Thomas*, Karen Thrasher*, Tricia Vogt*, Tami Watanabe, Merna Joan Watta*, Jay West*, Collie Will*, Laurie Wilson*, Shirley Wilson.

**Gallery Participation Members*

OUTSIDE EVENTS CALENDAR

Regular Meetings:

TUTU'S HOUSE

885-6777

tutushouse.org

Tutu's Quilters with Kathy Lukens. Every Mon. 9:30-noon
Learn quilting Hawaiian style - beginners or experienced.

Knitting & Knitting Support w/Gretchen Geisler Every Tues. 12:30 Ages 10 to adult, all skill levels.

Advanced Ukelele with Aunty Marjie Spencer Every Tues. 9:30-11 am For experienced players of all ages.

Beginning Guitar & Vocals with Bobby Teixeira Every Wed. 3:30-5 pm Basic music theory, strumming patterns and chords to accompany your voice.

Mauna Kea Quilters Monthly Meeting 2nd Sat. of every month 9:30 am - noon
Thelma Parker Library meeting room. Call Becky Parkinson 937-2159 for information.

Fibre Arts League Monthly Meeting 1st Tuesday of each month 7:00 - 9:00 pm
Kenji's House in Kapaau Call North Kohala Community Learning Center for info: 889-5604 kolahalearning.org

One time January events:

Color Theory and Techniques in Watercolor - 3 Day Watercolor Workshop with Tracy Lewis

January 14-16, 10 am – 4 pm

An inspiring 3 day workshop filled with painting demonstrations, color theory exercises, individual painting instruction and critiques. This workshop focuses on the language of color theory and how to use it to create dynamic watercolors. You will have the choice to use what you learn with the exercises on your own composition or follow along with the instructor's demo. \$250 Held at Kohala Intergenerational Center at Kamehameha Park in Kapa'au.

Email thebubble94@yahoo.com, or call Carolyn Lancaster 987-3395 for more info.

WAIMEA COMMUNITY EDUCATION

885-1539

waimeaeducation.com

Japanese Calligraphy with Eriko Cackley Wed. January 11 - February 1, 6 - 8 pm.

Students will begin instruction by learning the types of Japanese calligraphy characters, including the meaning and origin of some Kanjis. Students will also learn how to use calligraphy tools, and basic postures before starting to write.

Then, basic techniques of using a brush through each of the easy characters will be taught, and students will finally choose a Japanese phrase or letter in Kanji to complete on the last day. \$60 plus \$10 materials

KAHILU THEATRE

885-686

kahilutheatre.org

January 9 7 pm Kelly Paige, Matt Snook & Friends FREE

January 16 4 pm Kamuela Philharmonic FREE

January 18 7 pm Noche Flamenca

January 26 7 pm Ladysmith Black Mambazo

January 30 7 pm Battlefield Band

Gallery of Artists

If you don't have a page in the Gallery of Artists book that sits in the Firehouse Gallery, you are missing a free chance to promote your work. Inclusion is open to all members, whether or not they are Gallery Participating Members. If you haven't seen it, come by the gallery and take a look. While documenting, you can leave the book open to that page and anyone coming in will know what kind of work you do.

If you wish to be added, go to our website, www.waimeaartscouncil.org, and print out the application form. After filling in the information, get the form and photos to Julie McCue and she will create a page for you. You can either drop it in her box at the gallery or email to jmccue@hawaii.rr.com or mail it to her at home at PO Box 1515, Kapaau, HI 96755. Contact her with any questions.

